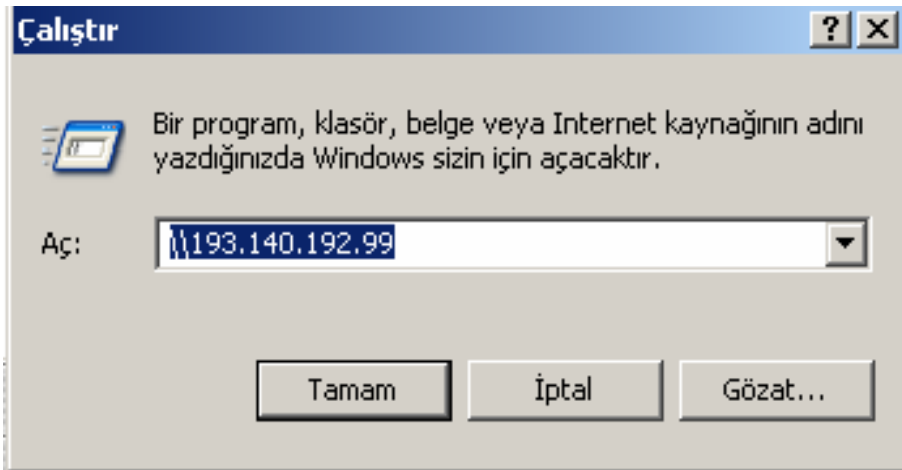


Visual C++ Program Installation

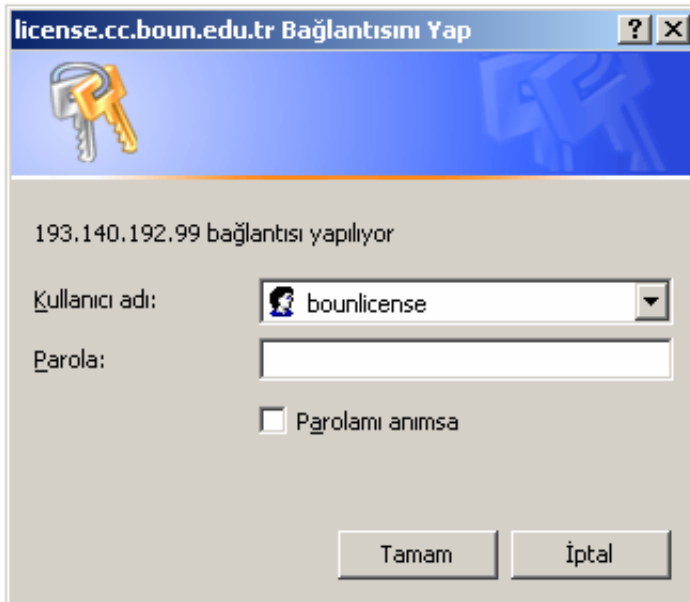
QUESTION: How do I find Visual C++ IDE? How can I install it.

ANSWER: You need to be in the university domain to install a licensed copy of Visual C++. Follow these steps.

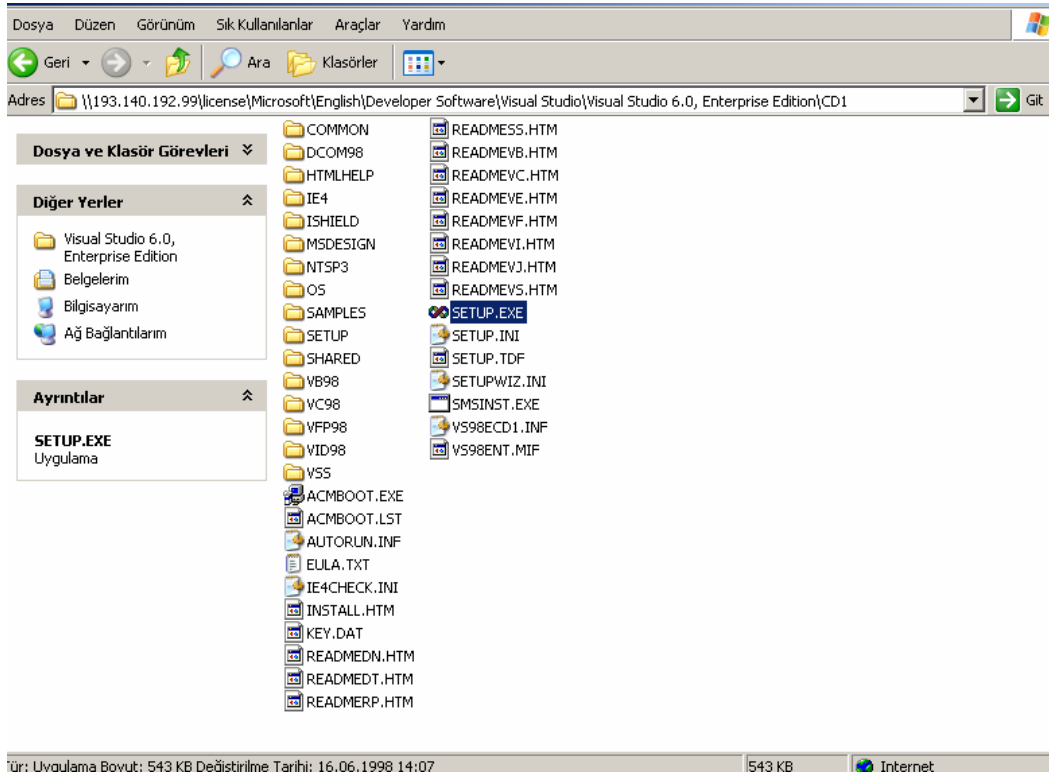
1. Press **Start | Run** in Windows and enter \\193.140.192.99



2. Write "bounlicense" as the login name. Leave password as blank.



3. Follow the path **license\Microsoft\English\Developer Software\Visual Studio\Visual Studio 6.0, Enterprise Edition\CD1**. Run setup and install. (You can install only Visual C++ option during setup in Visual Studio.)



Note: The up-to-date version of the information here can be found at http://www.cc.boun.edu.tr/license_server.html.